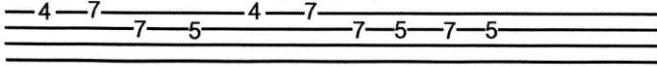


Right Said Fred (Bernard Cribbins, 1962)

Whistle this tune with [A] [D7]



[A]Right said [D7]Fred,[A] both of us [D7]together,
 [A]one each [D7]end and [A]steady as we [E7]go
 [A]Tried to [D7]shift it, [A]couldn't even [D7]lift it,
 [A]we was [D7]getting [A]nowhere
 And [D]so, [B7]we, [E7]had a cup of tea

[A]Right said [D7]Fred, [A]give a shout [D7]to Charlie,
 [A]up comes [D7]Charlie [A]from the floor be[E7]low
 [A]After [D7]straining, [A]heaving and [D7]complaining,
 [A]we was [D7]getting [A]nowhere
 And [D]so, [B7]we, [E7]had a cup of tea

[A]Charlie had a think and he [D]thought we ought, to [A7]take off all the [D]handles
 And the [B7]things that hold the [E7]candles,
 but it [B7]did no good, well [E7]I never thought it would

[A]Right said [D7]Fred, [A]have to take the [D7]feet off,
 to [A]get them [D7]feet off [A]wouldn't take a [E7]mo
 [A]Took its [D7]feet off, [A]even with the [D7]seat off,
 [A]should [D7]got us [A]somewhere [A7]but [F#7]no
 So [Bm]Fred said [E7]let's have a[A]nother [E7]cup of [F#m]tea
 and [Bm7]we said [E7]right [A]-o

[A]Whistle tune again then moves up a semi-tone [Bb] [Eb7]

[Bb]Right said [Eb7]Fred, [Bb]have to take the [Eb7]door off,
 [Bb]need more [Eb7]space to [Bb]shift the so and [F7]so
 [Bb]Had bad [Eb7]twinges [Bb]taking off the [Eb7]hinges,
 [Bb]and it [Eb7]got us [Bb]nowhere
 And [Eb]so, [C7]we, [F7]had a cup of tea

[Bb]Right said [Eb7]Fred, [Bb]have to take the [Eb7]wall down,
 [Bb]that there [Eb]wall is [Bb]gonna have to [F7]go
 [Bb]Took the [Eb7]wall down, [Bb]even with it [Eb7]all down,
 [Bb]we was [Eb7]getting [Bb]nowhere
 And [Eb]so, [C7]we, [F7]had a cup of tea

[Bb]Charlie had a think and he [Eb]said look Fred, [Bb7]I've got a sort of [Eb]feeling
 If [C7]we remove the [F7]ceiling,
 with a [C7]rope or two we can [F7]drop the blighter though

[Bb]Right said [Eb7]Fred, [Bb]climbing up a [Eb7]ladder,
 [Bb]with his [Eb7]crowbar [Bb]gave a mighty [F7]blow
 [Bb]Was he in[Eb7]trouble, [Bb]half a ton of [Eb7]rubble,
 [Bb]landed [Eb7]on the [Bb]top of [Bb7]his [G7]dome?
 So [Cm]Charlie and [F7]me had a[Bb]nother [F7]cup of [Gm]tea
 and [Cm7]then we [F7]went [Bb]home
 (Spoken)...I'll said to Charlie we'll just have to leave it standing on the landing that's all
 You see the trouble with Fred is he's too hasty. Now you never get nowhere if you're too hasty.

